

EDEN STREET DEVELOPMENT COMPANY LIMITED



DEVELOPMENT DIGEST

VOLUME 1 | ISSUE 1
JANUARY 2026

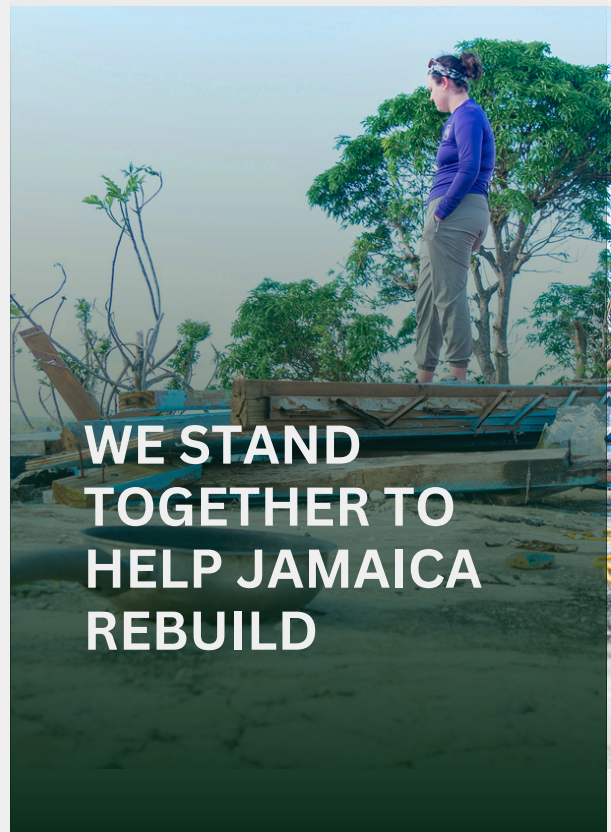
RELIEF-REHABILITATION-DEVELOPMENT:
A RESPONSE TO HURRICANE MELISSA

Eden Street-SEMBA Hurricane Melissa Relief Agenda

Eden Street Development Company Limited stands with all of Jamaica in this critical time as we seek to rebuild our nation after the passing of Hurricane Melissa. Our approach is ultimately sustainable development and as such our efforts at disaster relief and rehabilitation have that end goal in mind.

Support for victims of Hurricane Melissa just passed will be provided in collaboration with the St. Elizabeth & Manchester Baptist Association Churches (SEMBA). The SEMBA Disaster Response Team is led by Rev. Kirk Pinnock, pastor of the Mandeville Circuit of Baptist Churches which includes the Mandeville, New Green & Greenvale Baptist Churches.

The Mandeville Church is currently celebrating 185 years of wholistic service to the community of Mandeville and its environs. It, along with all SEMBA churches, are members of the Jamaica Baptist Union (JBU), formally constituted in 1849.



**WE STAND
TOGETHER TO
HELP JAMAICA
REBUILD**

DISASTER RELIEF & REHABILITATION SUPPORT

Whether the support provided is knowledge, financial or labour based; spiritual or managerial in orientation, we endeavour not to do for people what they can do for themselves.

RELIEF

We define relief as **urgent & temporary** provision of emergency aid to reduce immediate suffering.

After Hurricane Beryl in July 2024 Eden Street partnered with Samaritan's Purse to provide relief supplies, including food packages, water, solar lights, hygiene kits and tarpaulins to members of the community who had suffered damage.

With the passage of Hurricane Melissa, the support of Eden Street and SEMBA across many of the 18 SEMBA communities has been extensive. We have already distributed over 50 tarpaulins, water buckets, water purification systems and lamps with power bank feature; and over 500 relief/food packages. A picture is worth a thousand words! This is how we will tell our story of engagement to date. Our work has only just begun. We are committed for the long haul – relief, rehabilitation, development!



Relief Highlights



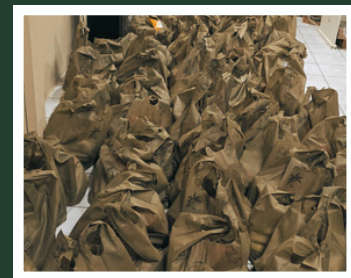
Parottee

Parottee in St. Elizabeth experienced extensive damage. Our team visited with supplies to combat poor water quality, provide backup electricity, and offer food supplies.



Roses Valley

The Roses Valley Baptist church was damaged. Our team visited to assess the extent of the damage and provide special ministry to children in the community.



Food Packages

Our team provided over 500 relief/food packages to people with the greatest needs.

PHOTO HIGHLIGHTS

THE PROCESS



These are some highlights of our team coming together to pack relief and food supplies for our mission trips.

PHOTO HIGHLIGHTS

MISSION TRIP TO ARLINGTON BAPTIST CHURCH & COMMUNITY



Arlington Baptist Church is located near to Parottee and Black River. Almost every house in the Arlington community was damaged. Our team provided food packages and partnered with Mercy Chefs to provide over 100 warm meals to feed the community.

PHOTO HIGHLIGHTS

MISSION TRIP TO PAROTTEE



There was wide-scale damage in Parottee as sea and swamp converged creating a breach in the road separating one section of Parottee from the other. There were also large solid waste debris deposits. Special ministry for the children was conducted and relief supplies were distributed.

PHOTO HIGHLIGHTS

MISSION TRIP TO ROSES VALLEY



There was damage to the Roses Valley Baptist Church. Our team provided special ministry to the children and provided relief supplies.

PHOTO HIGHLIGHTS

DEVASTATION IN ELDERSLIE

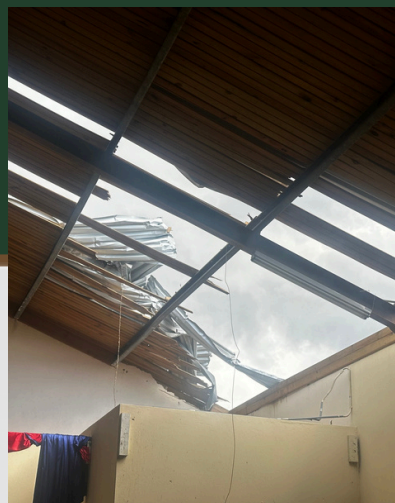


PHOTO HIGHLIGHTS

DEVASTATION IN BALACLAVA

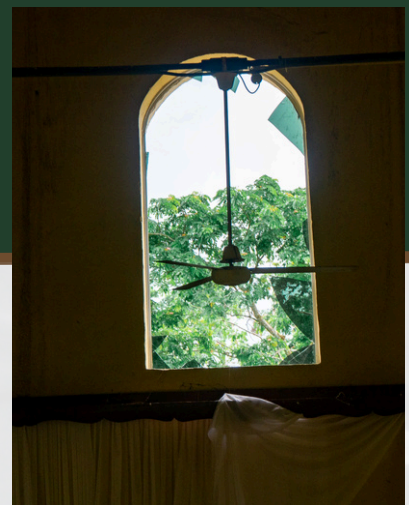


PHOTO HIGHLIGHTS

DEVASTATION IN BURNT SAVANNAH



DISASTER RELIEF & REHABILITATION SUPPORT

REHABILITATION

We define rehabilitation as **restoring** people and their communities to **positive pre-crisis levels**.



For Hurricane Melissa Rehabilitation it's all hands on deck. It comes at great cost but with proper damage and needs assessments, collaboration with other agencies, proper and timely deployment of resources we can and we must make the sacrifices necessary to restore our communities.

We have had the good fortune of partnering with Cooperative Baptist Fellowship this past December to scope out some of the most affected areas and begin the process of rehabilitation. They are our "stars of hope" and, yes, they brought stars created by churches in the USA and Puerto Rico to help remind us all that in the midst of great pain if we look up there are hands outstretched to lovingly and prayerfully support us through the pain and despair. We are not alone!

Rehabilitation Highlights

Rehabilitation partner, Cooperative Baptist Fellowship, led by Rev. Laura Ayala.

Stars of Hope



Caring for Those Who Care for Others



PHOTO HIGHLIGHTS

GIFTS TO THE SEMBA CHURCHES

TO ENABLE GREATER SERVICE TO THE COMMUNITIES IN WHICH THEY SERVE



PHOTO HIGHLIGHTS

GIFTS TO THE SEMBA CHURCHES

TO ENABLE GREATER SERVICE TO THE COMMUNITIES IN WHICH THEY SERVE



EDEN STREET DEVELOPMENT INITIATIVES

HURRICANE MELISSA CHICKEN REARING INITIATIVE

Food security and revitalized livelihoods for chicken farmers across devastated communities in St. Elizabeth and Manchester



CATEGORY	No	Unit Cost	TOTAL (J\$)
CAPITAL COST			
Broiler Unit			
Building cost/sqft	100	2500	250,000.00
feeder	2	2000	4,000.00
waterer	2	8500	17,000.00
Chick font	2	1000	2,000.00
Tarpaulin	1	1500	1,500.00
Total housing cost			274,500.00
OPERATING COST			
Chicks ea	100	188	18,800.00
Feed (bags)	20	3000	60,000.00
Labour per day (42 days)	42	750	31,500.00
Transport	2	1000	2,000.00
Medication/Sanitizers	2	1000	2,000.00
Labour (Processing) - 3	2	3000	6,000.00
Bags for processing (pk 100)	2	500	1,000.00
Transport for finished goods	1	1000	1,000.00
utilities/ light	1	2000	2,000.00
Saw dust	20	300	6,000.00
Total operating cost			130,300.00
Total expenditure			404,800.00

**SPONSOR
A FARMER**

For us, development is a process of ongoing change that we hope will bring both the people being helped and the helper closer to being in right relationship with God and others, the only way to ensure transformation is sustained.

A key development initiative being pursued by Eden Street is the Chicken Rearing Legacy Project. This legacy project creates economic and business development support, as well as access to skills training and certification. (See [Documentary on Eden Street Chicken Rearing Legacy Project](#)).

It is our firm conviction that Development MUST run concurrently with Relief & Rehabilitation as we manoeuvre this crisis caused by Hurricane Melissa. As such, every effort is being made to re-energise the productive sector by getting our farmers producing IMMEDIATELY. Food security and restored livelihoods are foremost considerations. The Eden Street Chicken Rearing Legacy Project will be modified to cater to the immediate production needs of farmers in the disaster areas. Support will also be provided for farmers engaged in crop production – from tools to seeds to soil nutrients.

EDEN STREET PERFORMANCE COMMUNITY DEVELOPER



2013

Bee Keeping Seminar
– April 8, 2013

Youth Summer Camp
July/August 2013



2014

Community
Consultation



2015

Farmers' Market

Held as a pre-Harvest activity
in collaboration with New
Green Baptist Church, The
Farmers of New Green and the
New Green Community Club



2022

Annual Christmas
Packages Giveaway

Provision of 24 packages of
food and household supplies to
needy individuals and families
in the community.

Chickens were bought from
members of the community
who rear the birds.



2023

Annual Back to
School Initiative

Provided 24 children from the
NG Baptist church's Sunday
School, ages 3-17, with
exercise books, pencils, pens,
sharpener and erasers.

Handed over a wish list of
items to the Wiz Kids
Kindergarten and Daycare
operated by the New Green
Church of God of Prophecy.



2023

Annual Christmas
Packages
Giveaway

Provided 30 packages
with food and personal
supplies to needy
members of the
community, including 4
shut-ins – 26 individual
and 4 family-sized
packages.

Recipients received 1
chicken each, sourced
from chicken farmers in
the community.

Recipients were given the
opportunity to shop
without charge for
clothing and personal
items secured from
overseas earlier in the
year.



2024

Hurricane Beryl
Relief Supplies

Provided 28 packages
with food and personal
supplies to members of
the community affected
by the hurricane

HOW CAN YOU HELP



In Jamaica we famously say,
“Every mikkle mek a mukkule”
meaning every dollar counts!
There is no gift too small. Of the
18 churches and communities in
SEMBA you may know of
someone who experienced loss,
or that may have been where you
were born or grew up. Give back!
Or it may be that the Spirit of
God is leading you to make a
contribution that will impact
someone's life. Give!

Ways to contact us:

Email us at:
edenstreetdevco@gmail.com

Call the office of the Mandeville Circuit
of Baptist Churches at:
+1876-962-3118
+1876-962-4745



Eden Street Development
Company Limited

EDEN STREET WHO WE ARE!

Eden Street Development Company Limited is a non-profit established in 2013 by the New Green Baptist Church to carry out outreach activities in the community of New Green, Manchester. With the passage of Hurricane Beryl in 2024 it became necessary to provide support for victims of the hurricane. With the passage of Hurricane Melissa the mandate expanded first to the entire Mandeville Circuit of Baptist Churches (New Green, Mandeville and Greenvale Baptist) and then to the entire St. Elizabeth and Manchester Baptist Association (SEMBA). Eden Street provides the vehicle through which donations are received and processed, while SEMBA mobilizes on the ground activities ensuring that communities within its purview are given the necessary relief and rehabilitation support.

With respect to Eden Street's development agenda, pastor of the Mandeville Circuit and lead mobilizer for SEMBA, Rev. Kirk Pinnock, says it most aptly:

It forms part of the New Green Baptist Church's overall programme of Evangelism and Discipleship built on the triple pillars, Engage, Empower, and Example!

- **Engage** - to diversify the Church's footprint in the community and broaden the avenues through which the grace of God can be administered.
- **Empower** - respond to the Community's need for economic growth, economic independence and economic integration.
- **Example** - each recipient of developmental support will become a very potent and public example of what participation in God's economy can do in transforming the lives and fortunes of those who place their trust in Him.