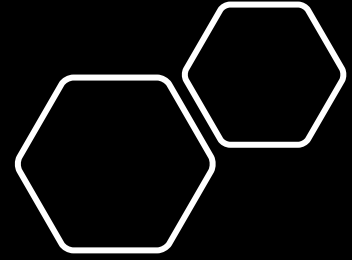




*Eden Street Development  
Company Limited*



# New Green Learning Gap Intervention

Presented on behalf of Eden Street Development  
Company Limited

- Registered Local Charity - CAIN100-109C
- Driving sustainable community growth through economic & social outreach projects in the New Green Community, Manchester, Jamaica since 2013 –See the **Eden Street Infomercial** at the following link

[https://drive.google.com/file/d/1aRY\\_SEY1r6QUz\\_v6Gr-kJ2M4hnHt0pTfX/view?usp=sharing](https://drive.google.com/file/d/1aRY_SEY1r6QUz_v6Gr-kJ2M4hnHt0pTfX/view?usp=sharing)




# Project Description

The learning gap problem being experienced by children across Jamaica has reached epidemic proportions.

It requires immediate and innovative intervention.

It is not a quick fix and requires commitment which Eden Street is prepared to make.



Eden Street is prepared to administer the innovative Classroom in a Box product to help mitigate learning deficiencies.

25 students will benefit using the tools, resources and support systems provided that will correct the learning gap, bringing them up to their assigned grade levels.

# Market Landscape/Opportunity

- *While Jamaican children on average complete 11.7 years of education, they acquire the equivalent of only 7.2 years of learning.*
- *This learning gap is disproportionately impacting children from lower-income households.*
- *The Ministry of Education and Youth (MOEY) estimates that approximately 120,000 children had little to no contact with the education system during the Covid 19 pandemic.*
- *By the end of 2021, Jamaican children had been deprived of 19 months of face-to-face learning.*
- *This translates into close to 1.3 billion hours of in-person learning lost - resulting in additional learning gap of 1.3 years.*

# Solution to LEARNING GAP problem

- Classroom in a Box is an offline, self-contained, e-Learning platform that can simplify the delivery of digitized content to students everywhere without dependence on internet access.
- It allows content to be preloaded onto the unit/box and accessed via a WIFI connection.
- Each device has a WIFI signal range of about 200ft.
- Up to 200 persons can access the unit at the same time.
- The content on the unit is 100% customizable, meaning each student can access content customized for him/her.
- School Management System – provides teacher and learner resources to enable and enhance the e-learning experience. This includes preloaded material (e.g. Ministry of Education Grades 1-9 National Standards Curriculum).
- Learning Management System – equipped with a comprehensive database system which can be used for managing the learning centre's daily operations.

# COMMUNITY Traction/performance - Eden Street

**Youth Summer Camp  
July/August 2013**

**Community  
Consultation – February  
13, 2014**

**2015 Farmers' Market**

**December 2022  
Christmas Packages  
Giveaway - 24 packages  
to needy community  
members.**



**2023 Annual Back to  
School Initiative**

Provided 24 children from the NG Baptist church's Sunday School, ages 3-17, with exercise books, pencils, pens, sharpeners and erasers.

Handed over a wish list of items to the Wiz Kids Kindergarten and Daycare operated by the New Green Church of God of Prophecy.

**December 2023  
Christmas Packages  
Giveaway - 30 packages  
to needy community  
members.**



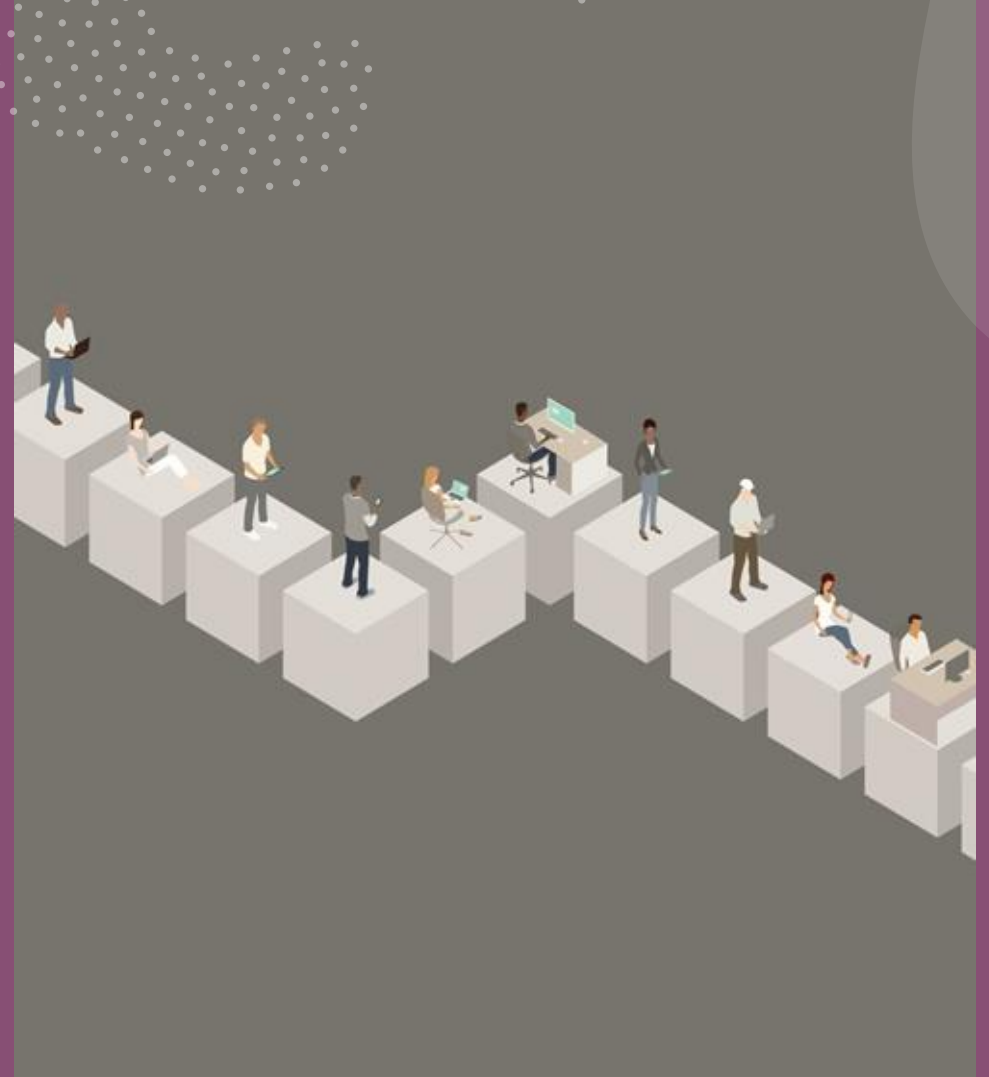
**July 17, 2024 –  
Hurricane Beryl Relief  
Supplies**

Provided 28 packages with food and personal supplies to members of the community affected by the hurricane



# Competitive Advantage

This type of intervention is not only novel, but also does not exist in the community



# Revenue Model

- Donor funding is required to operationalize this intervention.
- It is a social intervention and not expected to generate revenue.
- Host organization is currently working on developing a business enterprise that generates sufficient income to sustain this intervention beyond the first 3 years.



# Expense Model

- Sound administrative and accounting systems instituted with emphasis on:
  - record keeping
  - monitoring & evaluation
  - accurate reporting
  - precise and budgeted spending



# Financial/Business Model



DONOR FUNDING FOR  
FIRST 3-YEAR COHORT



CLOSE MONITORING &  
CONSTANT EVALUATION



DEVELOPMENT OF  
BUSINESS ENTERPRISE



BUSINESS ENTERPRISE  
UNDERTAKES  
SUCCESSIVE  
INTERVENTIONS

# Capital Raise & Use of Proceeds



Secure USD 93,135 in donor funds to cover full operational cost of 3-year programme.



Establish solid administrative & financial support systems  
Orient and install academic personnel.



Operationalize intervention.

# Thank You!

- Contact Dr Judith Johnston:  
Email - [jandrea\\_jm@yahoo.co.uk](mailto:jandrea_jm@yahoo.co.uk);  
Mobile - 876-441-9467



*Eden Street Development  
Company Limited*